

ELECTRICAL OPTIONS/ SPECIFICATIONS

OUTPUT SUPPLY

0.5 TO 4.5V RATIOMETRIC 5V
SUPPLY CURRENT 12mA TYP. 20mA MAX.

CABLE: 0.2mm², O/A SCREEN, PUR JACKET – SUPPLIED
WITH 50cm OR REQUIRED LENGTH IN cm (15000cm MAX).
STANDARD 3-CORE: JACKET ø4mm BLACK e.g. L50
OPTIONAL 5-CORE: JACKET ø4.6mm BLUE e.g. LQ50

CABLE/CONNECTOR* CONNECTIONS;

3 CORE	5 CORE	CONNECTOR	
RED	RED	:1	+Ve
–	ORG	:1	+SENSE (5-WIRE ONLY)
BLACK	BLACK	:3	0V
–	GRY	:3	–SENSE (5-WIRE ONLY)
WHITE	WHITE	:2	OUTPUT
SCREEN	SCREEN	:4	BODY

*CONNECTORS; MAXIMUM CONDUCTOR CROSS SECTION 0.75mm²

RANGE OF DISPLACEMENT FROM 0–2mm TO 0–50mm e.g.36,
IN INCREMENTS OF 1mm.

BODY MATERIAL: STAINLESS STEEL.

FLANGE MATERIAL: STAINLESS STEEL (CODE 'N')

FURTHER OPTIONS:

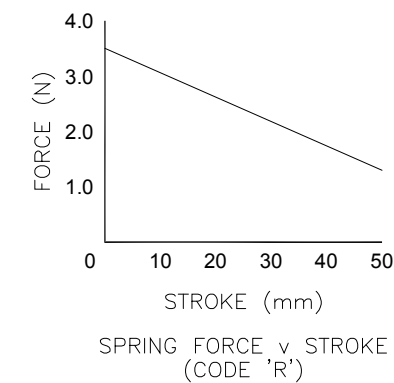
SINGLE PAIR OF BODY CLAMPS (CODE 'P')

SPRUNG PLUNGER, TO EXTENDED POSITION (CODE 'R')

DOMED END (CODE 'T') IN CONJUNCTION WITH SPRUNG
PLUNGER (CODE 'R')**

PLUNGER FREE (CODE 'V')

N.b. NOT AVAILABLE WITH SPRUNG OPTIONS.



NOTE:– READ INSTALLATION SHEET E103–19
FOR FULL INSTRUCTIONS FOR USE.

ATEX / IECEx APPROVED TO

II 1GD

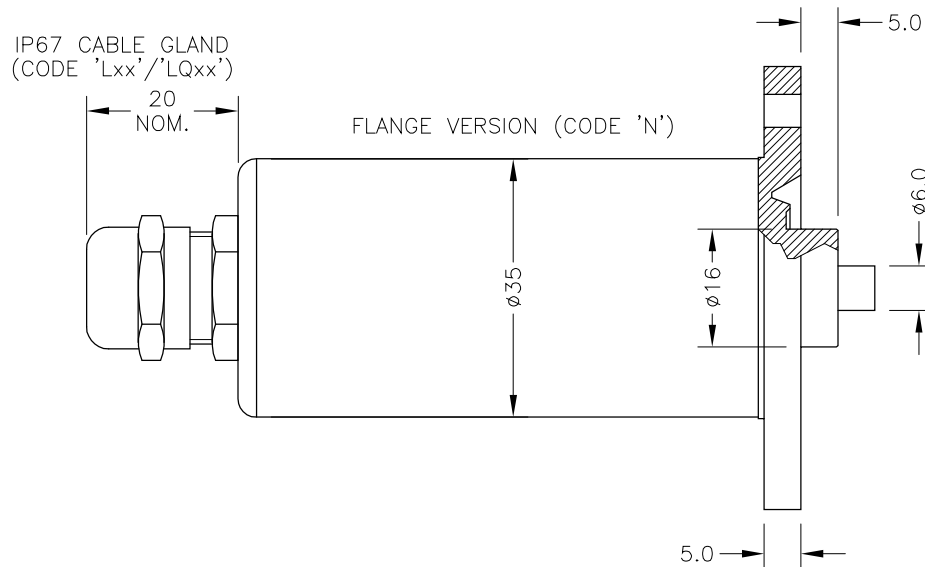
Ex ia IIC T4 Ga (Ta= –40° to +80°C)

Ex ia IIIC T135°C Da (Ta= –40° to +80°C)

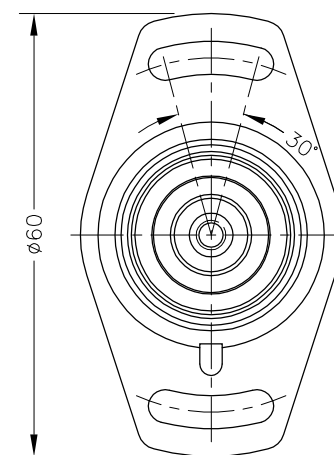
Ui 11.4V, li 0.2A, Pi 0.51W

APPROVED FOR USE IN CONJUNCTION
WITH A GALVANICALLY ISOLATED BARRIER.

NOTE: APPROVAL ONLY APPLIES AT NORMAL
ATMOSPHERIC PRESSURE!

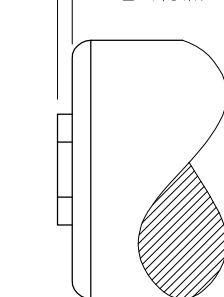


FLANGED BASE
SYMMETRICAL WITH 2 OFF 4.5
SLOTS ±15° ON 48.0 PCD.



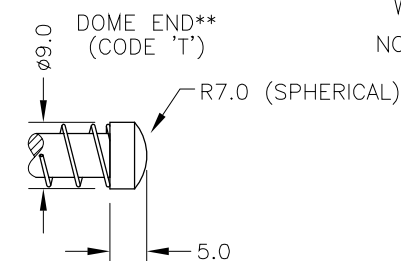
IP67 SHORT CABLE GLAND
(CODE 'Mxx'/'MQxx')

2 NOM.



NOTE: SENSORS WITH TRAVEL UP TO 50mm ARE MADE IN STANDARD LENGTHS.

TRAVEL: (mm)	BODY LENGTH: (mm)
CALIBRATED MECHANICAL	'Y' FLANGE
0–2 TO 0–10	10
0–11 TO 0–20	20
0–21 TO 0–30	30
0–31 TO 0–50	50



H	STROKE NOTES AMENDED.	PDM
I	APPROVAL STANDARDS UPDATED - RAN465.	PDM
J	STROKE 2-10 WAS 10 - RAN1063	PDM
K	5-CORE OPTION ADDED ~ RAN1102	PDM
L	OPTION 'M' ADDED ~ RAN1166, RANGE NOTE AMENDED ~ RAN1200	PDM



DRAWINGS NOT TO BE CHANGED WITHOUT REFERENCE TO THE CHANGE PROCEDURE.
CHANGES TO PARTS USED IN INTRINSICALLY SAFE PRODUCT MUST BE APPROVED
BY THE AUTHORISED PERSON
THIS IS AN UNCONTROLLED PRINT AND WILL NOT BE UPDATED.

DSPM Industria
sensori & trasduttori

Via Paolo Uccello 4 - 20148 Milano

Tel +39 02 48 009 757 Fax +39 02 48 002 070

info@dspmindustria.it www.dspmindustria.it

POSITEK
P
LIMITED

H	21/11/13		CHECKED BY RDS	X	±0.4
I	10/03/14			X.X	±0.2
J	10/11/15			X.XX	±0.1
				DIMS	mm
K	10/04/17	DESCRIPTION			
L	29/08/17	E103 INTRINSICALLY SAFE SHORT STROKE LINEAR POSITION SENSOR			
SCALE 10mm		DRAWING NUMBER		E103-11	REV L
				SHEET 1 OF 1	